

MPH-305: Computer Applications in Public Health

Mid-term Examination

Instructors: Ms. Nehdia Sameen and Ms. Aashifa Yaqoob

February, 2007

Total Marks: 10

Part 1: Theoretical

Time: 1 hour

Marks: 5

Choose the best possible answer to the questions below. Each question is worth ½ a mark.

Q1: Hardware is:

- The mind of the computer
- The physical machinery of the computer on which software runs
- Application programs that you use to carry out specific tasks
- A set of connections between computers and peripherals

Q2: An example of a volatile* storage device is:

(* The term “volatile” refers to a device losing its contents when the electricity supply to the computer is switched off.)

- Hard disk
- Random Access Memory (RAM) chips
- USB/flash disks
- CD-ROM/DVD/ROM

Q3: Application software runs on top of:

- The hardware
- The operating system
- Wordprocessing software
- Statistical software

Q4: A firewall is used to:

- Prevent unauthorized access to your computer while you are surfing the Internet by filtering all incoming and outgoing network and Internet traffic
- Scan your computer for malicious viruses
- Back up your data
- Speed up your computer

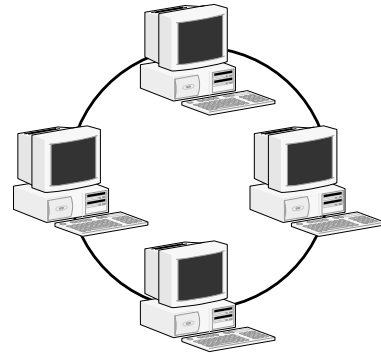
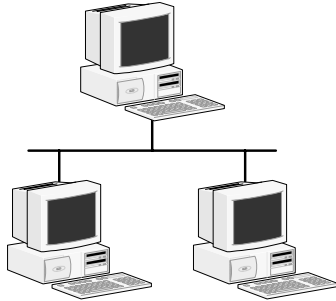
Q5: The following are the steps through which the process of web surfing takes place.

- A. The web page pops up on your screen.
- B. You type a URL into your web browser.
- C. Your web browser forms a connection to the Web server designated by the URL, requests a page and receives it.

Choose the correct sequence of these steps from the options shown next:

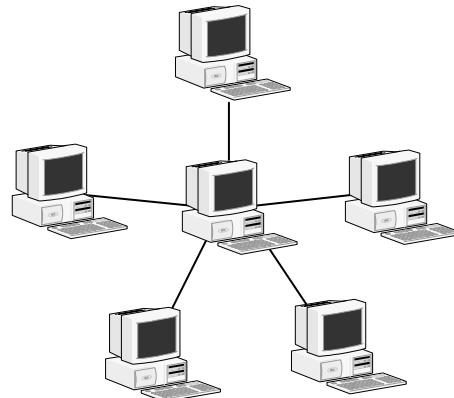
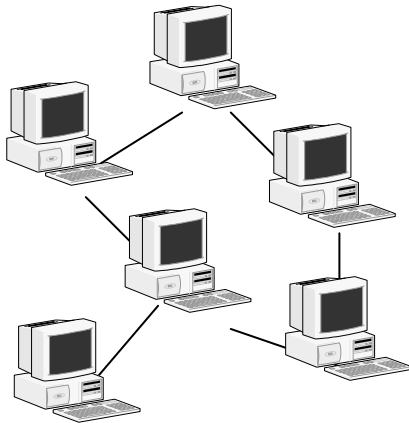
- A, B, C
- B, C, A
- B, A, C
- A, C, B

Q6: Choose the network arrangement below that corresponds to a **ring topology**:



Arrangement A

Arrangement B



Arrangement C

Arrangement D

Q7: Microsoft Outlook 2003 is used for:

- Composing documents and reports
- Carrying out statistical analyses
- Managing e-mail
- Making presentations

Q8: Which of the following is NOT true about the Internet?

- Routers are devices that determine the path between you and an Internet server.
- The Internet provides many services, such as the World Wide Web and e-mail.
- When a computer connects to the Internet, it becomes part of a worldwide network.
- An overall centralized network controls the Internet.

Q9: Choose the most popular search engine in the world today:

- AOL
- MSN
- Yahoo
- Google

Q10: Which of the following will produce the most narrowed-down search results in PubMed?

- diabetes
- diabetes AND hypertension AND nephropathy
- diabetes AND hypertension
- diabetes OR hypertension

MPH-305: Computer Applications in Public Health

Mid-term Examination

Instructors: Ms. Nehdia Sameen and Ms. Aashifa Yaqoob

February, 2007

Total Marks: 10

Part 2: Practical

Time: 1 hour

Marks: 5

Q1: You will be provided with a Microsoft Word 2003 document that already contains text, as well as a printed version. Your task is to add the three endnotes, and properly cross-reference the endnotes where needed.

Marks: 3

Q2: Create a blank presentation with about three slides (it does not matter what content you put on the slides) in Microsoft PowerPoint 2003 and use the Master view to make the phrase “Health Services Academy” appear on each slide in the footer area.

Marks: 2